

LEANING IN

2021 ANNUAL REPORT

rmhcbayarea.org

Follow us @RMHCBayArea    

#KeepingFamiliesClose



Ronald McDonald House Charities®
Bay Area

Regional Headquarters
510 Sand Hill Road
Palo Alto, California 94304
Tax ID Number: 94-2538615

Board of Directors

OFFICERS

Heather Pietsch

President

Amy Oliver

Immediate Past President

Vania Santella

Treasurer

Katty Coulson

Secretary



DIRECTORS

Cecilia Aviles

Eileen Bocci-Campbell

Laura Boudreau

Lisa Caswell

Anthony Ewell

Lee Ann Freeman

Ross Glasser

Willie Hernandez

Gerry Hinkley

Linda Howell

Brad Koenig

Brad Lyman

Bob McIntire

Kelley Meade, MD

Christophe Mosby

Solomon Moshkevich

Rich Seiler

Rishi Seth

Greg Sinigiani

David Thomas

Sean Truesdale

YOU SHOWED UP FOR FAMILIES AND KIDS FACING MEDICAL CRISIS. AGAIN.

It has been more than two years since the pandemic turned our lives upside down. Together, the entire world experienced the weight of medical crisis. Now, we all have a clearer picture of what families with sick children must cope with—pandemic or no pandemic. Fear, uncertainty, and constant vigilance. Fatigue and worry. Like the young patients and families we serve, you have no choice but to lean in and move forward, day by day. And like our families, we draw strength from each other.

While others were weary, our donors, volunteers, and partners stepped up to help us provide 24,000 nights of housing and 96,000 meals to families facing medical crisis on top of medical crisis. While others felt untethered, 1,281 new donors joined our ranks and reinforced our efforts to be an anchor for families. While other organizations scaled back, we broke records and expanded our programming to help more families. Because of you, we established a strategic growth fund so we can continue to evolve, pivot, and respond to the needs of our families and hospital partners. Because there is one thing we know for sure: we must be ready to adapt and change—to be there for families, when and where they need it most.

As I reflect on my 11 years at RMHC Bay Area, I am convinced, more than ever, that agility is our superpower. You have helped us build more than a Ronald McDonald House. You have created an entire neighborhood of support. As we start to emerge from this historic pandemic that has demanded so much of us, it is time to lean in. Together, we can achieve our ultimate goal: to be there for every family accessing critical care for their child in the Bay Area. Thank you for all you have done—and for all we will do in the year ahead. You have proven, yet again, that when the going gets tough, we lean in—so families have someone to lean on.

With gratitude,

Laura Keegan Boudreau, Chief Executive Officer

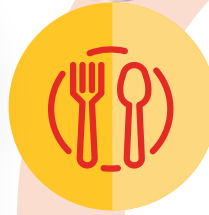
2021 Woman of Influence | *The Silicon Valley Business Journal*

Learn more: rmhcbayarea.org/ceo



“Together, we can achieve our ultimate goal—to be there for every family accessing critical care for their child in the Bay Area.”

—Laura Keegan Boudreau, CEO



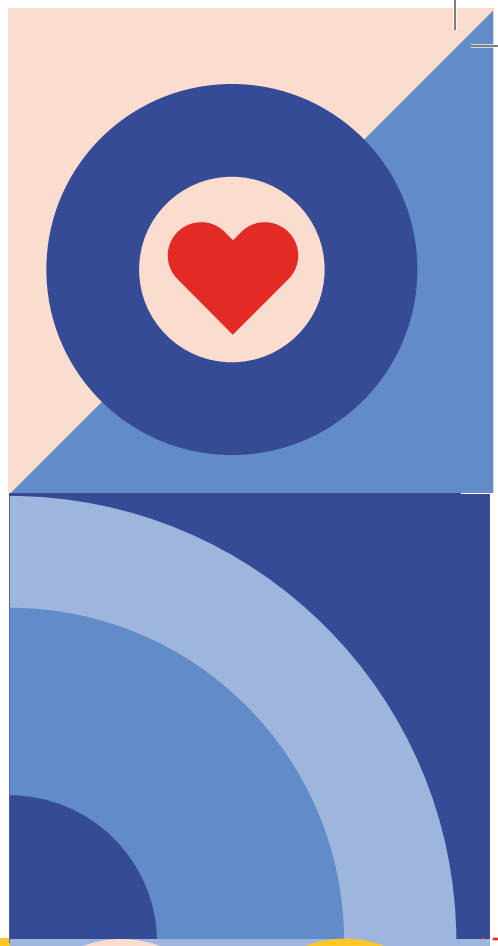
Supporter Spotlight



“John Arrillaga is quite literally part of the fabric and spirit of Ronald McDonald House at Stanford.”

—Laura Keegan Boudreau, CEO, RMHC Bay Area

Philanthropist John Arrillaga, Sr., (center) a visionary real estate developer and namesake of our 67-bedroom Arrillaga Family Center at Ronald McDonald House at Stanford, passed away at 84 in January 2022. He helped us secure the land that made the Bay Area home to one of the largest Ronald McDonald Houses in the world. Because of John Arrillaga, we can help thousands more medically fragile children and families every year find comfort and support just moments away from lifesaving medical care. As his daughter, Laura Arrillaga-Andreessen, said, “Few people demonstrate more powerfully the way that generosity’s impact outlasts the act of giving.”



“We are forever grateful to have a place to stay with our family as our daughter recovers.”

— Adrianna’s mom, Abigail

FAMILY FEATURE

Meet heart warrior Adrianna. In February 2021, Adrianna’s mom, Abigail, experienced a parent’s worst nightmare. Her 9-month-old was gasping for air, and she didn’t know why. In an instant, everything changed. At their home in Hawaii, they were an ocean away from the advanced medical care in the Bay Area that Adrianna’s life depended on.

“After constantly worrying about my daughter and her operation, I was also worrying about who was going to take care of my son at home, where I would sleep, what would I eat, and how to get through all of these challenges, especially during the pandemic,” Abigail said. “What RMHC provides is much more than just a place to stay. So, my family and I would sincerely like to thank each and every one of you for helping and making all of this possible.”

We’ll share more of Adrianna’s heart transplant journey in the coming months. Sign up for exclusive updates: rmhcbayarea.org/news-sign-up



Feed the Love partner, **Catered Too!**, showed up big time for families, donating their services and preparing and packaging more than **37,000 meals** so we could feed families with hospitalized children across the Bay Area.



BAY AREA PROGRAMS & SERVICES

Supportive Family Housing

- 123-bedroom Ronald McDonald House at Stanford
- 11-bedroom Ronald McDonald House San Francisco
- Alternative housing services¹
- Daily meal support

Comprehensive In-Hospital Programs

- Happy Wheels bedside visits²
- Onsite meal services
- Sibling support

Family Support Services³

- 24/7 crisis response
- Unlimited psychosocial support
- Bilingual services
- Family wellness activities

Child Enrichment & Education³

- Credentialed K-12 school
- Daily art & learning activities
- Family recreation
- Camp Ronald McDonald House³

Ronald McDonald Care Mobiles offering free dental care for vulnerable children

¹ Serving families across the Bay Area thanks to our housing partners

² Temporarily suspended due to COVID-19

³ Adapted to hybrid in-person/online format

YEAR AT A GLANCE:

In 2021 your donations provided...

23,832 overnight stays for families nearby and inside the hospital

\$11,081,880-worth of supportive housing services

95,897 free meals for families with hospitalized children, offsetting \$1.4 million in meal expenses

92,626 lbs of food distributed thanks to our Second Harvest food bank partnership

4,000 Comfort & Joy items donated, providing an estimated value of \$88,000-worth of toys and care items

3,175 snack packs delivered to families at the hospital

2,000 hours of psychosocial support

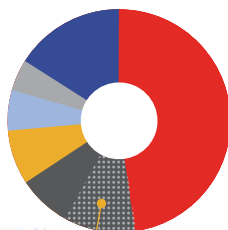
90 students enrolled in hybrid Ronald McDonald House School (Carter Family Classroom)

2021 FINANCIALS*

TOTAL REVENUE RAISED (CASH): **\$6,150,000**

DONATIONS OF GOODS & SERVICES: **\$768,205**

- We turn every \$1 donated into \$5-worth of family services
- 81% of all funds raised directly support families

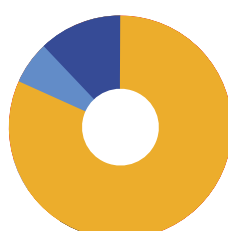


REVENUE SOURCES:
44% Individual Donors
19% Endowment
16% Corporate Support
8% Foundations
7% Events
5% Earned Income



65% of corporate support comes from our local McDonald’s owners and customers

CONTRIBUTED TO STRATEGIC GROWTH FUND:
\$795,000 to rapidly respond to emerging family needs



TOTAL EXPENSES:
\$6,122,791

EXPENSE SOURCES:
81% Programs
13% Fundraising
6% Administrative

*Unaudited Financials