

# ANNUAL REPORT

STEADY THROUGH THE STORM

# 2019

[rmhcbayarea.org](http://rmhcbayarea.org)

Follow us @RMHCBayArea   

#KeepingFamiliesClose



Ronald McDonald  
House Charities®  
Bay Area

## Board of Directors

### OFFICERS

**Amy Oliver**  
President

**Brad Lyman**  
Vice President

**Sean Truesdale**  
Treasurer

**Cheryl Cheng**  
Secretary

### DIRECTORS

Eileen Bocci-Campbell

Lisa Caswell

Anthony Ewell

Lee Ann Freeman

Gerry Hinkley

Linda Howell

Brad Koenig

Anne McCune

Bob McIntire

Christophe Mosby

Solomon Moshkevich

Heather Pietsch

David Rosenthal, M.D.

Vania Santella

Rich Seiler

Jeff Silk

Greg Sinigiani

David S. Thomas

## THANKS TO OUR COMMUNITY OF SUPPORTERS, MISSION PARTNERS, AND CHAMPIONS,

we are housing, feeding, and supporting families of the sickest children through COVID-19.

As I reflect on the major successes of 2019 outlined in this report, there is no doubt that it is you—our Greater Bay Area community—who have allowed us to provide steady support when families need us the most.

Last year, 252 megaBITES groups donated more than \$150,000 and 750 kitchen hours, helping us provide nearly 200,000 meals to families. Despite COVID-19 restrictions, many megaBITES groups are still sponsoring meals for our staff to prepare on their behalf.

As we face \$1.4 million in losses due to COVID-19, our essential staff remain a support for families fighting for their children's lives—and that's because of you, our donors.

The successes of last year have not been overshadowed by this current crisis. Rather, the generosity of our community has been a guiding light, providing hope and essential resources. Because of you, I have no doubt RMHC Bay Area will emerge from this crisis stronger than ever.

With gratitude,

Laura Boudreau, MPH, MSW  
CEO, Ronald McDonald House Charities Bay Area

**"I want RMHC Bay Area to be the  
first line of support for any family  
seeking treatment for a critically  
ill child in the Bay Area."**

—Laura Boudreau, CEO



“It is in the worst of times when we see how much people care through their love, support and prayers.”

—Scott Lamson, founding board member, Ronald McDonald House San Francisco

### SUPPORTER SPOTLIGHT

Scott and Karen Lamson's support of RMHC Bay Area began in the '70s after Scott's brother asked for their support to establish Ronald McDonald House at Stanford. Later, they would also help found Ronald McDonald House San Francisco. This more than 40-year family legacy carries on as their son, **Greg Sinigiani**, serves on the board today.



The Lamson Family, circa 1989, at the dedication of Ronald McDonald House San Francisco with young Greg Sinigiani (far left), a current board member.

### FAMILY FEATURE

**Daniel Lorance and his 7-year-old daughter Maddy** have relied on our housing, meal, and support services—both before and during the pandemic—for nearly a year. Three times a week Maddy undergoes dialysis treatments, as they await Maddy's kidney transplant.

“It can be a little rough on her,” Daniel said of the treatments that can take more than three hours per session. “She'll come back a little upset and the staff will try and get her to smile, and goof with her.”

Families like the Lorances remain the heart of our mission to provide communities of support, access to medical care, and the healing power of family and home during medical crises.



“To me, it's a godsend. I've got a safe environment for my daughter, and we can still maintain her care.”

—Daniel Lorance, parent

### 2019 AT A GLANCE:

In 2019, your donations provided...

**36,292 overnight stays** for families nearby and inside the hospital

**\$16,875,780** worth of housing, meal and support services

**3,000 hours** of psychosocial support

**191,400 meals** to families with hospitalized children in the hospital

**3,772 children** with educational and enrichment programming

**14,167 children** with preventative dental services

**33,778 families** with in-hospital meals, respite, and support

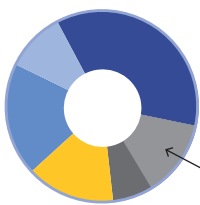
**2,400 volunteers** donated **18,500 service hours** offsetting nearly \$556,000 in operating costs and fostering a supportive community that families can lean on.

### 2019 FINANCIALS\*

TOTAL REVENUE RAISED: **\$5,616,100**

DONATIONS OF GOODS & SERVICES: **\$290,831**

- We turn every \$1 donated into \$5-worth of family services
- 80% of all funds raised directly support families



#### REVENUE SOURCES:

- 35% Individual Donors
- 20% Corporate Support
- 13% Foundations
- 19% Events
- 11% Earned Income

69% of corporate support comes from our local McDonald's owners and customers



RMHC Bay Area is rated Platinum by Charity Navigator.

TOTAL EXPENSES: **\$5,575,447**

TOTAL PROGRAM EXPENSES: **\$4,433,131 (80%)**

TOTAL ADMINISTRATIVE EXPENSES: **\$429,946 (7%)**

TOTAL FUNDRAISING EXPENSES: **\$712,371 (13%)**

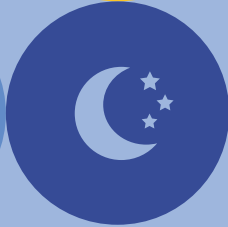
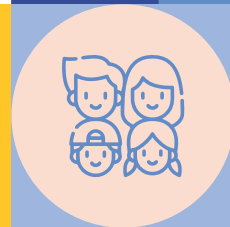
\*Unaudited Financials



Ronald McDonald House Charities Bay Area

Tax ID Number: 94-2538615

Regional Headquarters  
510 Sand Hill Road  
Palo Alto, California  
94304



### BAY AREA PROGRAMS & SERVICES

#### Supportive Family Housing

- 123-bedroom Ronald McDonald House at Stanford
- 11-bedroom Ronald McDonald House San Francisco
- Alternative housing services\*
- Daily meal support

#### Comprehensive In-Hospital Programs

- Happy Wheels bedside visits
- Onsite meal services
- Sibling support

#### Family Support Services

- 24/7 crisis response
- Unlimited psychosocial support
- Bilingual services
- Family wellness activities

#### Child Enrichment & Education

- Credentialed K-12 school
- Daily art & learning activities
- Family recreation
- Camp Ronald McDonald House

**Ronald McDonald Care Mobiles** offering free dental care for vulnerable children

\*Serving families across the Bay Area thanks to our housing partners



Apartment List

